



CONCEAL® Zipper Foot

For Oscillating Hook Models

This CONCEAL® Zipper Foot is specially designed for Oscillating hook models. It enables smooth and easy attachment of a CONCEAL® Zipper which is often used in ready-made products.



Front of presser foot



Back of presser foot

1. What is a CONCEAL® zipper?

A CONCEAL® zipper features a thin, soft tape that blends into the stitching. This type of zipper is often used for products where a zipper should not be visible, such as dresses and skirts.

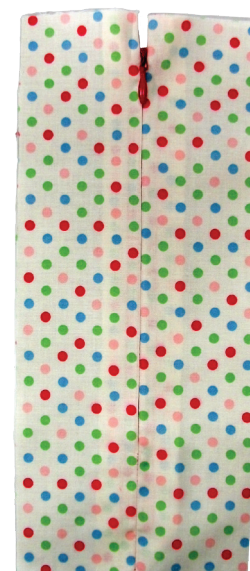
2. Easy to attach and detach

This product is sold as a single foot attachment. When attaching or detaching the CONCEAL® Zipper Foot, the holder does not need to be replaced.

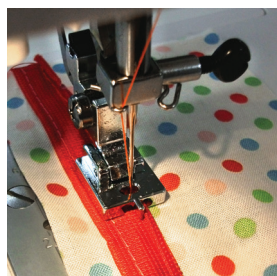
To remove a standard snap-on foot, press the lever on the back of the foot holder while the foot is raised. To attach the foot, lower the foot holder on to the CONCEAL® Zipper foot attachment bar.

3. Left and right grooves

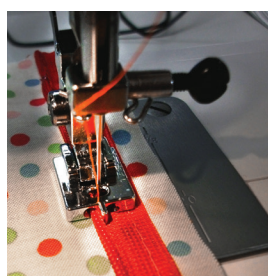
There are two grooves on the back side of the foot. Each groove helps get the needle as close to the zipper teeth as possible. The CONCEAL® Zipper foot accomplishes this by slightly unrolling the zipper just before the needle. Once finished, a well sewn CONCEAL® Zipper will hide the zipper teeth



CONCEAL® Zipper Sample



Sew the zipper and fabric using the right groove



Sew the zipper and fabric using the left groove



Foot is designed to work with Oscillating hook models



Attached CONCEAL® Zipper Foot

*CONCEAL is a registered trademark of YKK Corporation.

Part No. 202-475-002