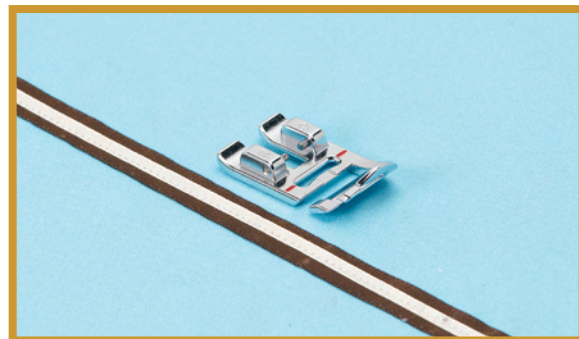


BABY LOCK SEWING ACCESSORIES

Decorative Tape Foot

(BLQ2-DTF)

Instructions

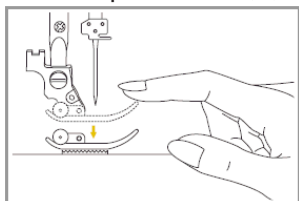


The Decorative Tape Foot allows you to add different types of trims to your projects for unique embellishments. The opening at the front of the foot and groove underneath the presser foot guides trims and ribbons through the foot with ease.

INSTRUCTIONS:

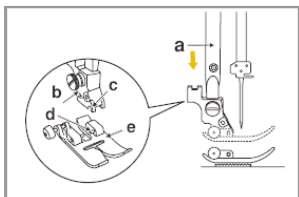
Removing the presser foot

Raise the presser foot (a).



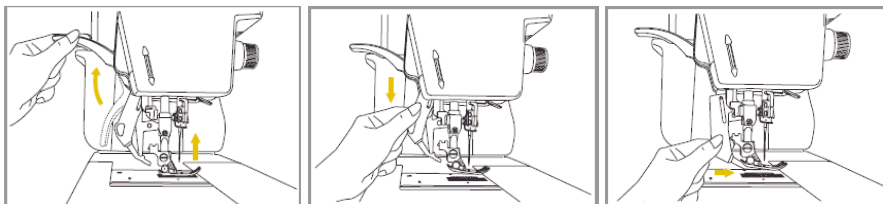
Attaching the presser foot

Lower the presser foot holder (b) until the notch (c) is directly above the pin (d). Lower the presser foot holder (b) and the presser foot (e) will engage automatically.

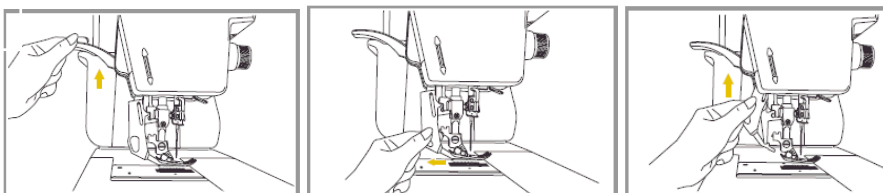


The Precision Dual-Feed Quilting System (PDQ) feeds the fabric from the top and bottom simultaneously to ensure matching of the fabric layers, used for quilting layers of fabric and batting, and when matching checked, striped or plaid fabrics.

To Activate and Deactivate the Precision Dual-Feed Quilting System (PDQ)

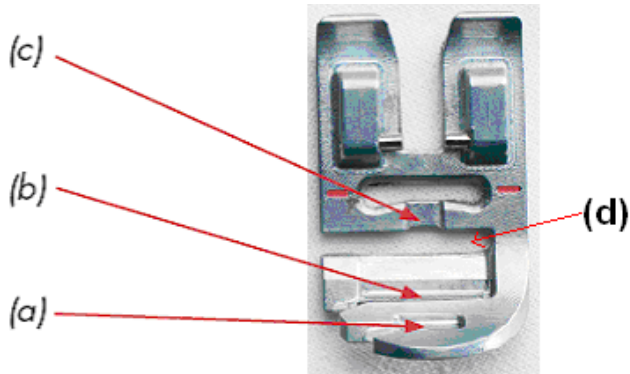


To activate the PDQ system, raise the presser foot. Lower the PDQ mechanism slowly and swing the PDQ mechanism forward under the back of the presser foot until it is engaged and stays in the system. To deactivate the PDQ system, raise the presser foot, pull down on the mechanism and swing it to the rear then raise the PDQ up.



FOR THE LOVE OF SEWING

1. The presser foot has two openings and one small groove:
The first opening (a) is perfect for 1/4" (6mm) wide trims
the second opening (b) is for 1/2" (12mm) wide trims. The
groove that is just in front of the needle (c) is for 1/8" (3 mm)
wide trims. **Note:** For best results use flat trims, or ribbons
with a Baby Lock stabilizer underneath the base fabric.



2. Thread your machine with regular sewing thread or decorative thread on top and regular sewing thread in the bobbin.
3. Select a straight stitch, zigzag stitch or decorative stitch.
Avoid using stitches with side motion and repeating stitches
with a lot of forward and reverse motion.
4. **Tip:** For the 1/4" wide trims, you can also use a 1/4"
(6.0mm) twin needle and use a straight stitch to sew at the
edges of the trim.
5. Place the ribbon or trim in the appropriate slot of the presser
foot. Sliding it under the presser foot in slot (d) and to the
back of the foot. When using the 1/8" ribbon or trim lay the
trim in the groove (c) and then under the needle.
6. Snap on the Decorative Tape Foot and engage the PDQ.
7. Sew at a slow and consistent speed.



FOR THE LOVE OF SEWING

800-422-2952

www.babylock.com