

BABY LOCK SEWING ACCESSORIES

Chenille Foot

(BLQ2-CHF)

Instructions

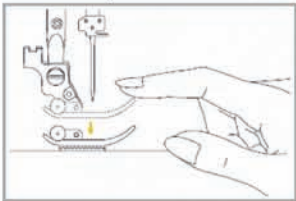
The Chenille Foot is designed to stitch through layers of fabric to create a chenille effect. This foot makes it easy to create gorgeous textured embellishments with strips of fabric.



INSTRUCTIONS:

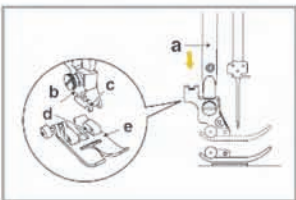
Removing the presser foot

Raise the presser foot (a).



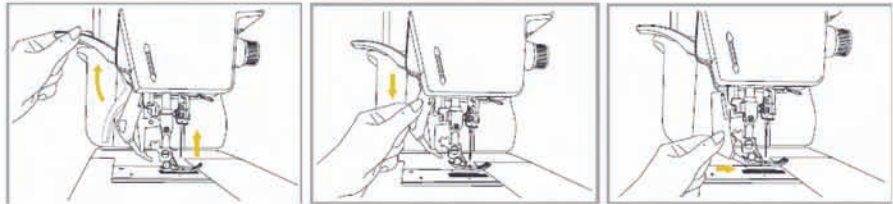
Attaching the presser foot

Lower the presser foot holder (b) until the notch (c) is directly above the pin (d). Lower the presser foot holder (b) and the presser foot (e) will engage automatically.

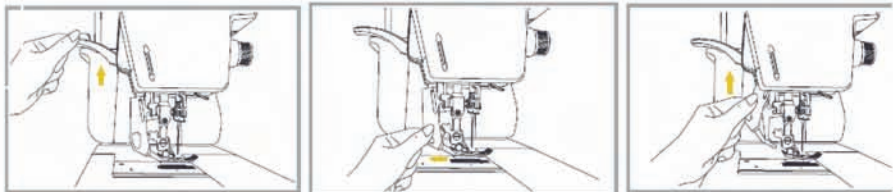


The Precision Dual-Feed Quilting System (PDQ) feeds the fabric from the top and bottom simultaneously to ensure matching of the fabric layers, used for quilting layers of fabric and batting, and when matching checked, striped or plaid fabrics.

To Activate and Deactivate the Precision Dual-Feed Quilting System (PDQ)



To activate the PDQ system, raise the presser foot. Lower the PDQ mechanism slowly and swing the PDQ mechanism forward under the back of the presser foot until it is engaged and stays in the system. To deactivate the PDQ system, raise the presser foot, pull down on the mechanism and swing it to the rear then raise the PDQ up.



FOR THE LOVE OF SEWING

1. Thread your machine with regular sewing thread on top and in the bobbin.
2. Select a straight stitch or zigzag stitch, selecting a short stitch length and a narrow stitch width.
3. With a rotary cutter, ruler and mat cut 5/8" wide strips of fabric for the chenille.
4. Place the strips through the front slot in the presser foot and then under the foot so the strips will be caught by the needle. This foot has a channel on the base of the foot to allow for the chenille strips. Use a minimum of three layers of chenille strips on lightweight fabrics. Using too thin of fabric or not enough layers can effect the proper feeding of the foot and look of the finished chenille.

Note: For best results use Baby Lock stabilizer underneath the base fabric.

5. Snap on the Chenille Foot and engage PDQ.
6. Sew carefully. The Chenille Foot will guide the chenille strips onto the fabric where you want to have the chenille effect with the stitch forming in the middle of the strips.
7. Repeat this process to add more rows of chenille.
8. Rub the strips with a stiff brush to fray.



FOR THE LOVE OF SEWING

800-422-2952

www.babylock.com