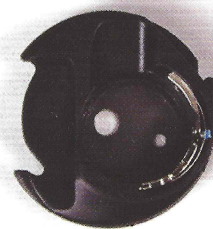


04 | LOW TENSION BOBBIN HOLDER

If you experience looping on the back side of your quilts when free hand quilting, the optional Low Tension Bobbin Holder for Free Motion Quilting and Hand Look Quilt Stitch will help resolve this issue.



It's also beneficial when working with heavier threads and is great for Free Hand Reverse Bobbin Work often referred to as Drizzling.

You will recognize the Low Tension Bobbin Holder by the blue arrow.

Machine Settings

- » Stitch: Straight
- » Thread Tension: Auto
- » Stitch Length: 0
- » Feed Dogs: Down

Bobbin Holder for Free Hand Quilting

1. Lock your machine if it has the lock feature. Remove the needle plate and insert the Low Tension Bobbin Holder.
2. Reattach the needle plate and thread machine and bobbin holder in the usual way for free hand quilting.
3. Quilt in your preferred method, keeping the movement of the fabric at an even speed.

Bobbin Work

Bobbin work is a technique which allows the application of threads that cannot be threaded in the needle to add textured detail to any project. Perle Cotton, polyester or rayon floss, heavy metallic threads, thin yarns and narrow silk ribbons are all good choices. Many types of fabric can be used for bobbin work, including cottons, velvet, and even sheer weights. It is necessary to use the appropriate weight and type of stabilizer on the wrong side of the fabric.

This technique can be done with decorative stitches as well as any straight stitch and can be done with the feed dogs up or with feed dogs down for free motion "drizzling".

04 | LOW TENSION BOBBIN HOLDER

Machine Settings For This Technique:

- » Stitch: Straight or decorative
- » Thread Tension: Auto or 3-6
- » Stitch Length: Auto or 0
- » Feed Dogs: Up or Down

Notes:

Refer to the owner's manual for your machine to locate the drop feed dog lever.

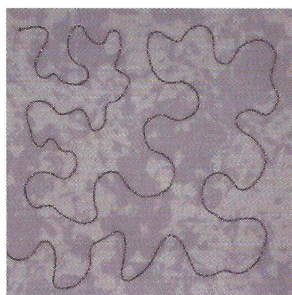
Notes:

You are in control of the direction of the stitches and the stitch length. The faster you move the fabric the longer the stitch length. You will need to practice to find the speed of the machine that best works with the speed you move the fabric.

“Tip:”

Set the machine at a medium speed. Then step all the way down on the foot control so that the speed of the machine remains consistent. This will make it easier to make even stitches.

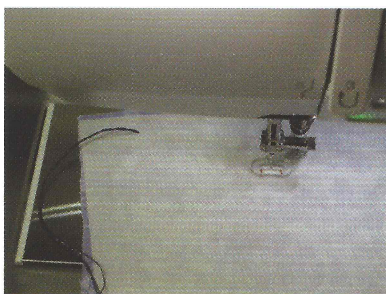
Drizzling



1. Wind decorative thread on the bobbin and place in the “blue” bobbin holder.
2. Thread needle with either a matching color embroidery thread or monofilament thread.
3. Attach Darning foot PD-H.
4. Select straight stitch, center needle position.
5. Drop feed dogs.
6. With a fabric marker draw a gently meandering line on a 6” x 6” cotton square.
7. Place 6” x 6” cotton square with stabilizer under presser foot so that stabilizer is facing up. The right side of fabric is against bed of machine.

04 | LOW TENSION BOBBIN HOLDER

8. Lower and raise the needle one time. Pull the bobbin thread to the top for a clean right side.
9. Sew in place 4-5 stitches to secure, then cut off tail.
10. Sew at an even speed, guiding fabric along drawn line.



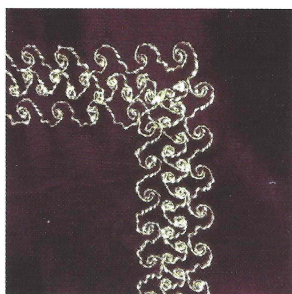
11. Once completed, stop, lower and raise the needle one time. Pull bobbin thread to the top for a clean right side.
12. Tie the thread tails to knot the end.
13. Turn fabric to right side to see the beautiful bobbin work.

Notes:



Do not use the locking stitch or the thread cutter with heavier weight threads in the bobbin holder.

Decorative Stitch Bobbin Work



1. Wind decorative thread on bobbin and place in the Low Tension Bobbin Holder.
2. Thread the needle with either a matching color embroidery thread or monofilament thread. Attach Satin Stitch foot F.

04 | LOW TENSION BOBBIN HOLDER

3. Select a decorative stitch.



4. Mark the center of 6 x 6 square stabilizer with a chalk line. Place stabilizer on wrong side of 6 x 6 square fabric.
5. Place the stabilizer and fabric under the foot so that the stabilizer is facing up.
6. With the center marking of the stabilizer matching the center marking of the F foot, press the Needle Up/Down button, and pull bobbin thread to the top of the fabric. This will eliminate a thread nest on the right side of the project.



7. Once completed stop, press the Needle Up/Down button to pull up the floss and trim. Tie the threads to knot the end.
8. Select a new stitch.

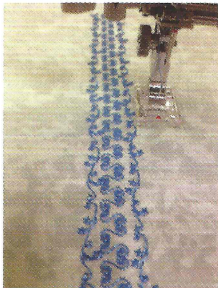


9. Line up the center stitching line just sewn so that it is slightly visible in the opening of Satin Stitch foot F on the right hand side. This will allow the next row of stitches to just barely touch the center row of stitching.
10. Continue sewing with this alignment.



04 | LOW TENSION BOBBIN HOLDER

11. Once completed, press the Needle Up/Down button to pull-up the bobbin thread.
12. Line up the center line of stitching so that it is slightly visible in the opening of the Satin Stitch foot F foot on the left hand side and continue to sew.
13. Once completed, press the Needle Up/Down button to pull up the bobbin thread.
14. Turn fabric to the right side to see the beautiful bobbin work combination.



Notes:

Do not use the locking stitch or the thread cutter with heavier weight threads in the bobbin holder.

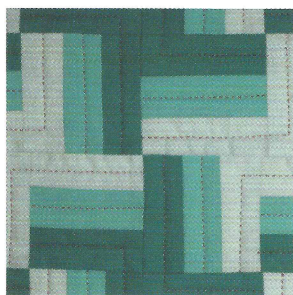
Notes:

Choose decorative stitches with minimal forward and backward movement to achieve the best look on the reverse side of the work. Avoid all satin stitches, since the heavier thread used on the bobbin will become too dense and build up under the presser foot so that the fabric will not move forward.

Notes:

As with any decorative technique always make a test using the same threads, fabric and stabilizer as the finished project.

Hand Look Quilt Stitches



Bobbin thread is the star of all hand look quilt stitches. For best results, wind a bobbin with 60-100wt thread, the finer the thread the easier it will be for the thread to slip to the top of the quilt sandwich.

Use a 100/16 needle, which will create a large hole in the quilt sandwich that will allow the fine thread to pop through to the top.

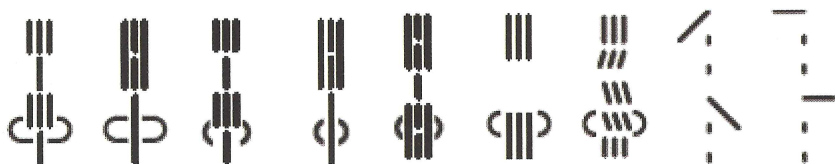
Thread the needle with a high quality monofilament thread.

04 | LOW TENSION BOBBIN HOLDER

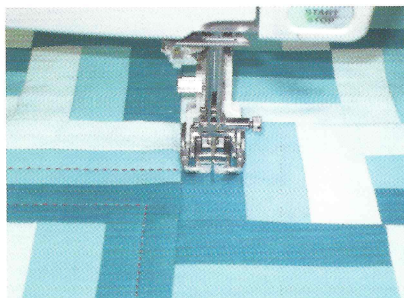
Machine Settings

- » Stitch: Hand Look Quilt stitch
- » Thread Tension: Auto or variable 8-9
- » Stitch Length: variable
- » Feed Dogs: Up

1. Insert the Low Tension Bobbin Holder. Insert 100/16 denim needle. Wind bobbin with 60-100wt thread. Thread needle with monofilament thread. Attach Even Feed Foot.
2. Select a hand-look/Sashiko stitch.



3. If your machine does not have automatic thread tension settings, tighten the needle thread tension.
4. Place a 6 x 6 quilt sandwich under the presser foot. Pull both threads to the back.
5. Start sewing. The bobbin thread should show on top. If necessary, tighten the needle tension to help pull the bobbin thread to the top.



04 | LOW TENSION BOBBIN HOLDER

Notes:

Many Janome machines have a unique feature called Sewing Applications. When selected, several different sewing techniques will appear. When you choose one, your machine will automatically set up for that technique.

Refer to the manual to see if your machine has this feature. If so select the Quilting Application, then choose Hand-Look or Sculpture.

